

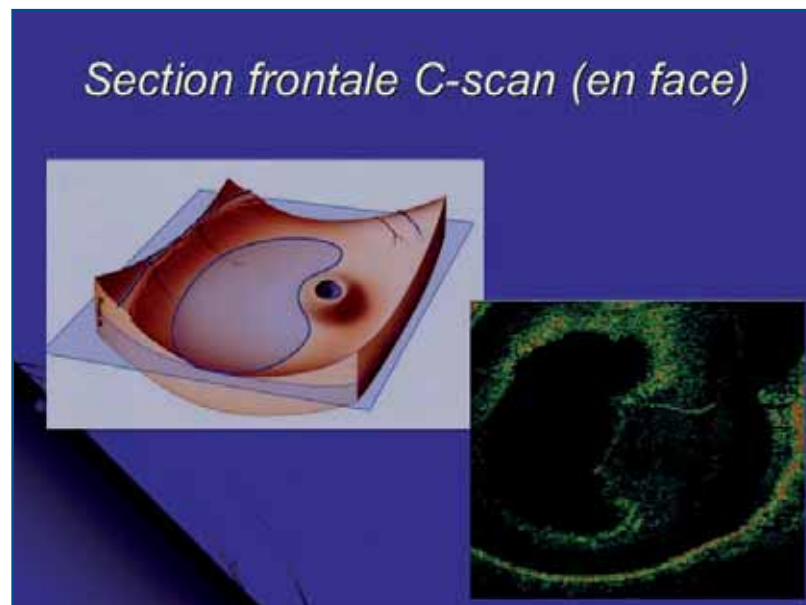


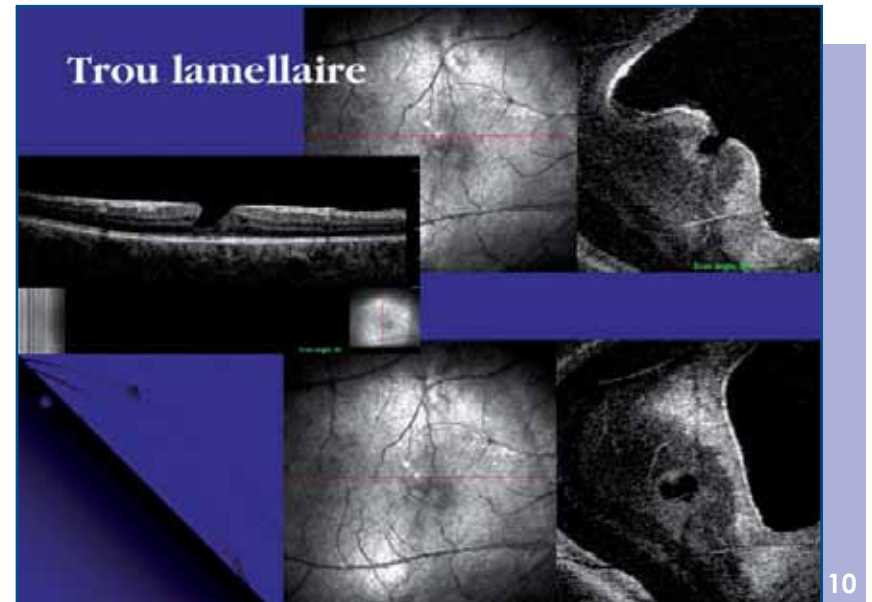
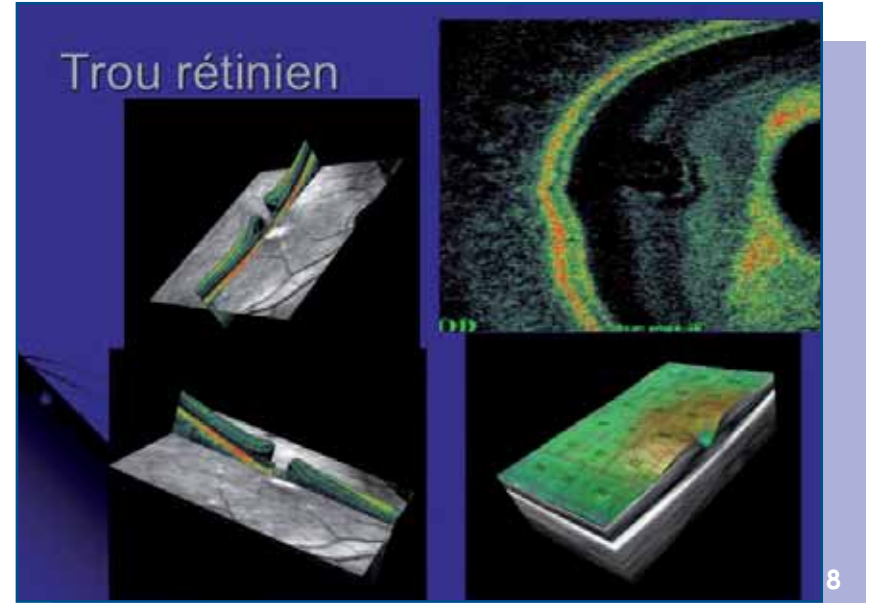
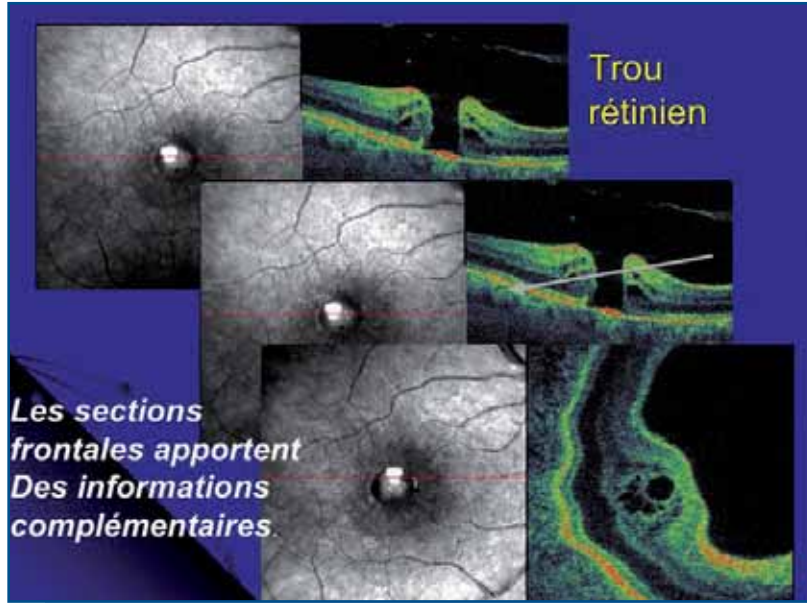
L'OCT/SLO dans la pathologie de l'interface vitréo rétinienne

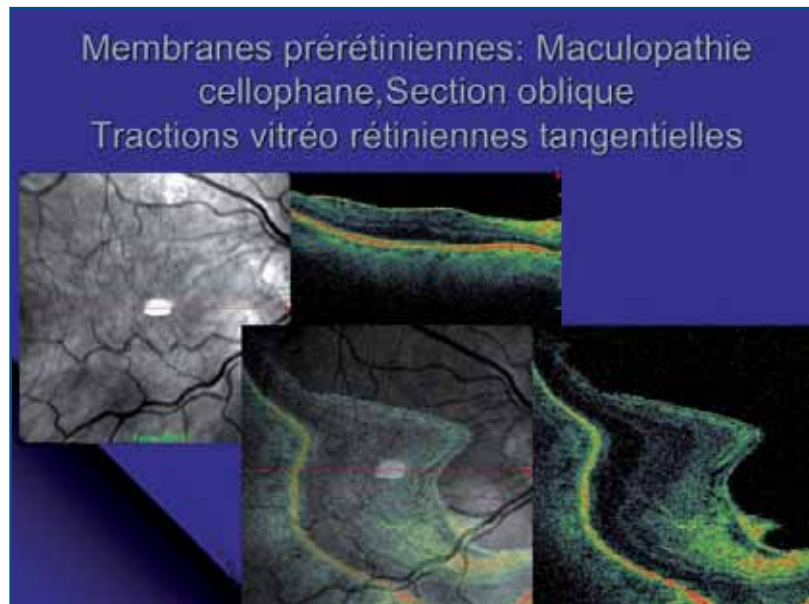
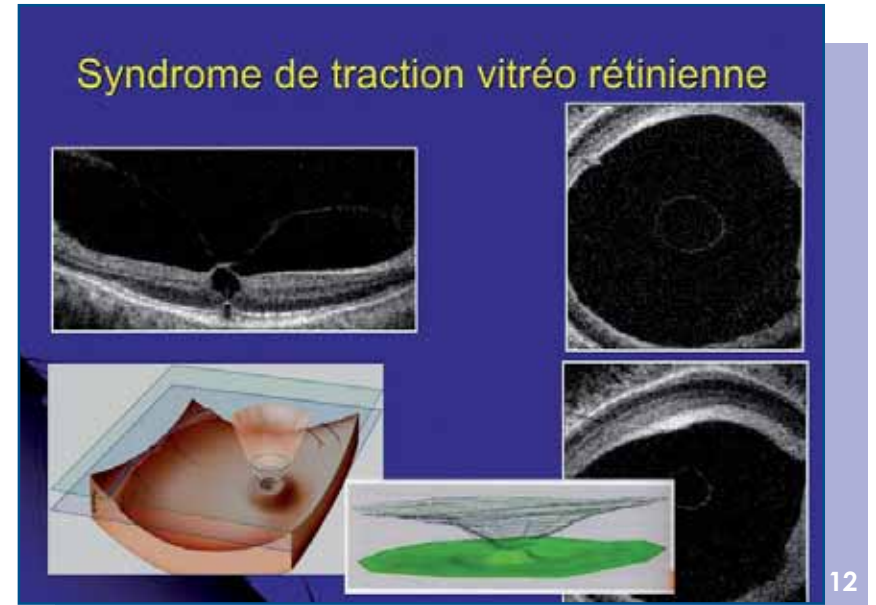
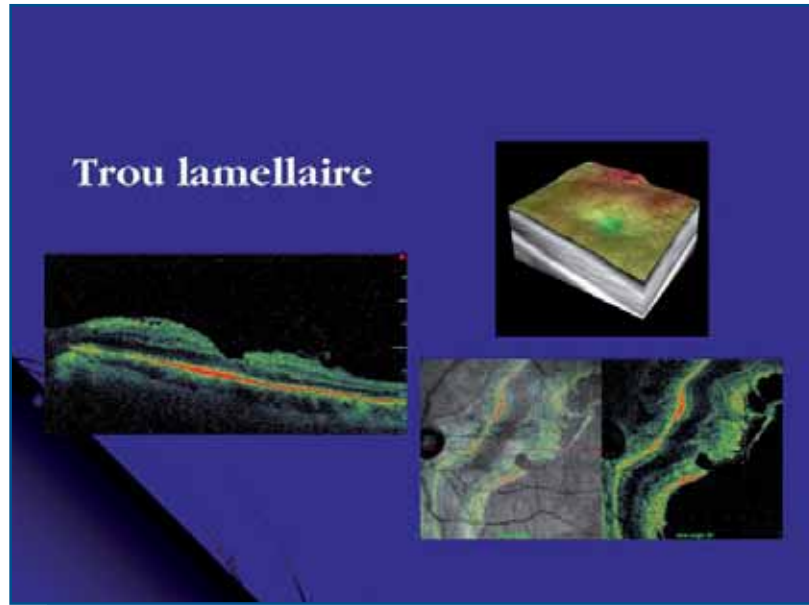
L'OCT/SLO dans la pathologie de l'interface vitréo rétinienne

Par Bruno Lumbroso (Rome)

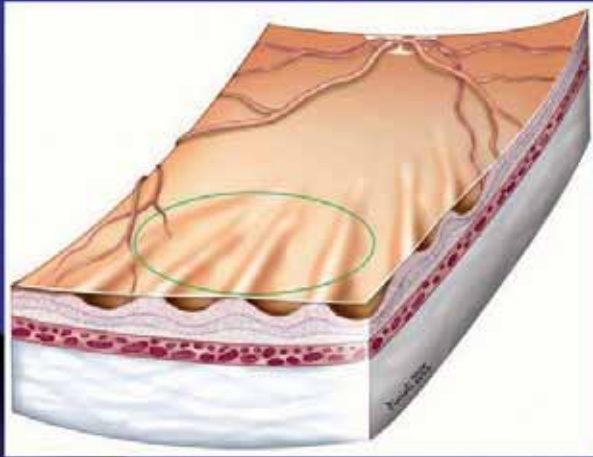






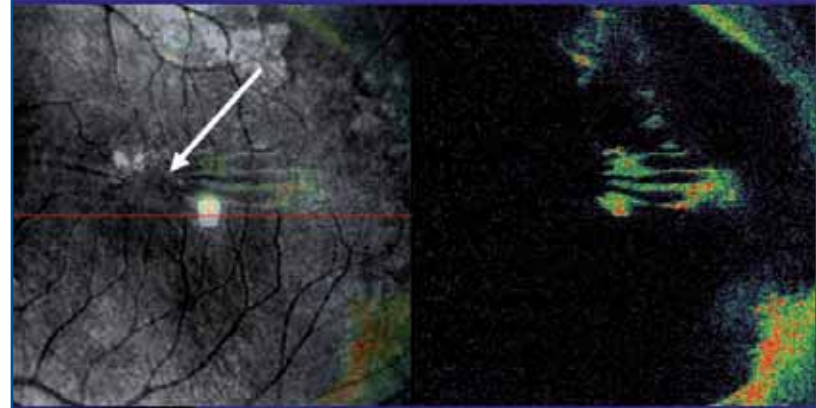


Plis réiniens Tractions vitréo
réiniennes tangentielles



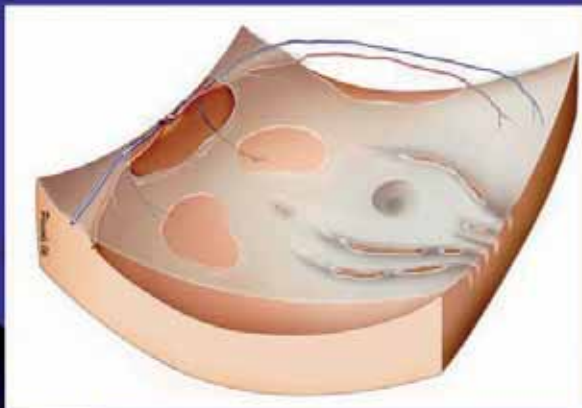
15

Plis réiniens maculaires parallèles
Tractions vitréo réiniennes tangentielles



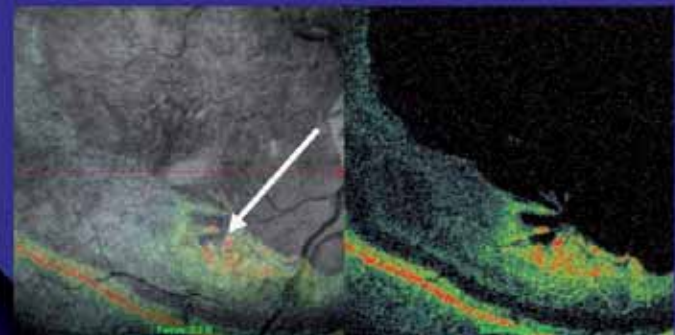
16

Tractions vitréo réiniennes tangentielles

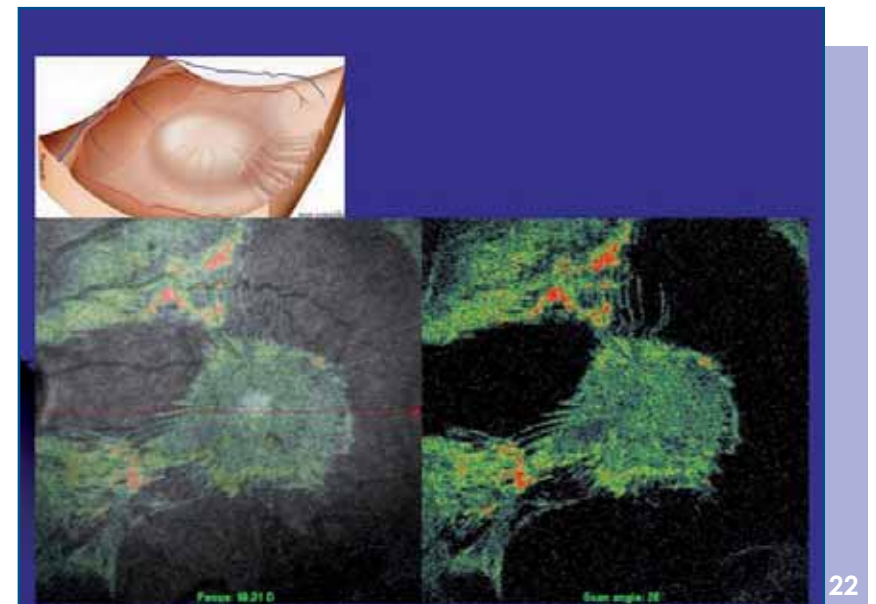
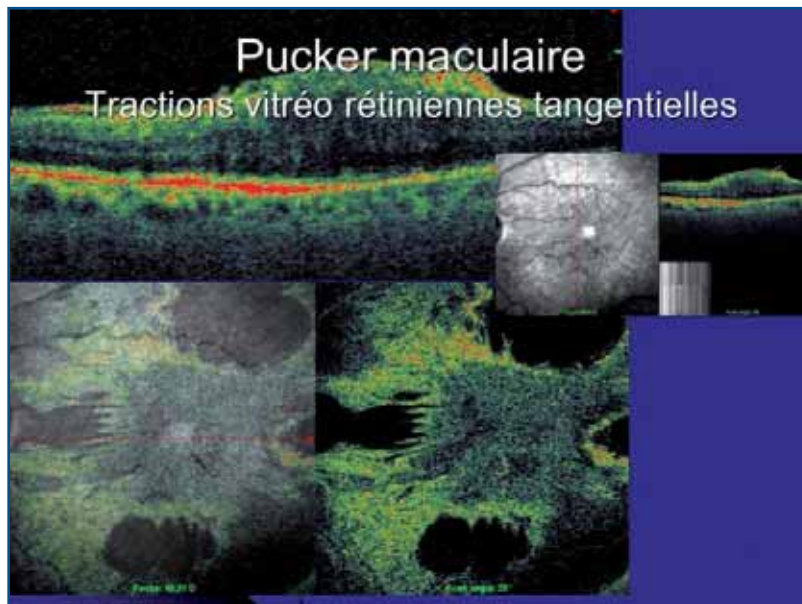
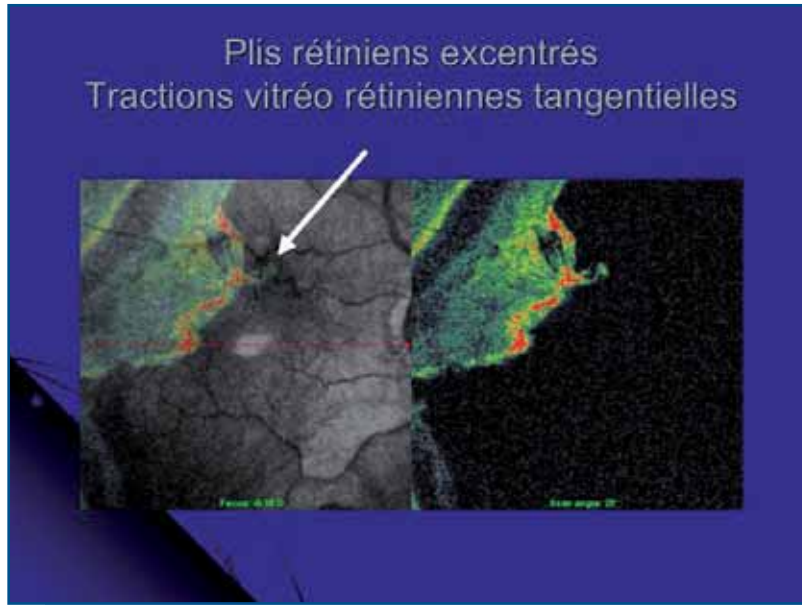


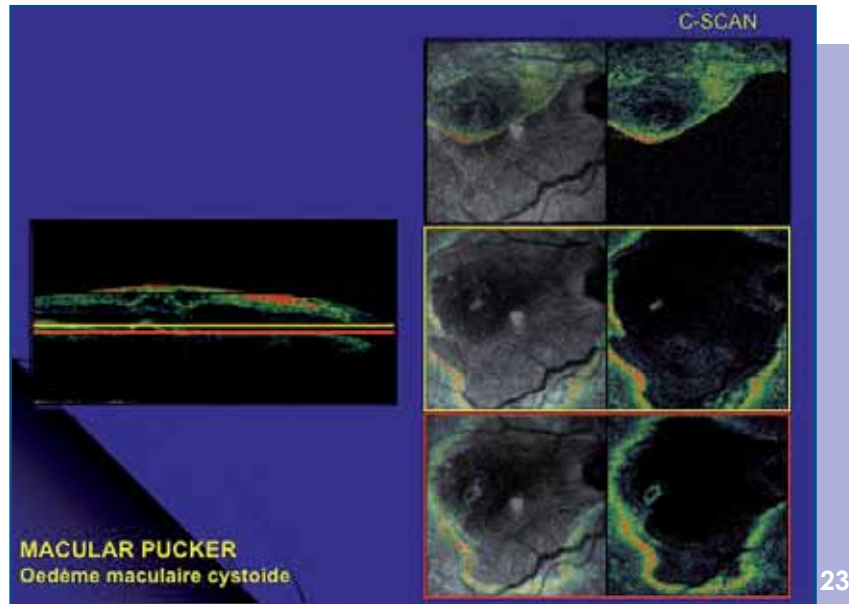
17

Plis réiniens excentrés
Tractions vitréo réiniennes tangentielles



18

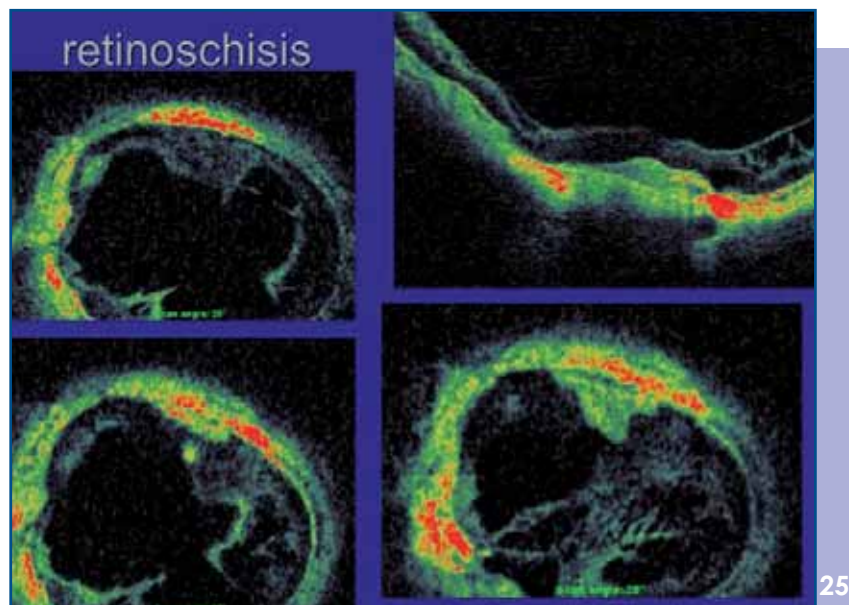




23



24



25



26